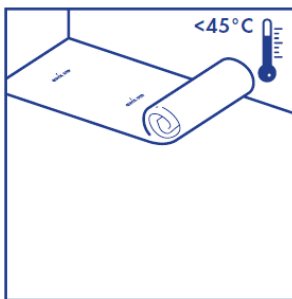


### **Install your floor between 18 and 30° C.**

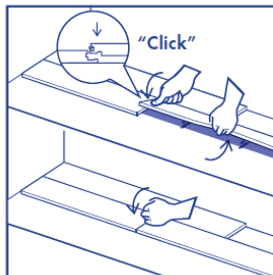
Cflors's Windsor SPC must be acclimatized in the room of installation between 18-30°C for a period of at least 48 hours before installation. This floor & room temperature needs to be maintained prior to, during and for at least 24 hours after the installation is completed.



### **Do not use Cflors SPC underlay where the floor temperature will exceed 45 degrees.**

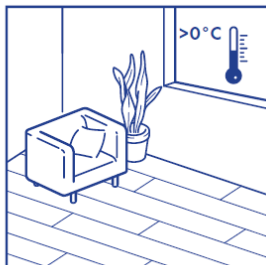
Cflors's Windsor SPC has been designed to be installed into regulated environment above 0 degrees. It should not be installed into solariums, caravans, boats or other extreme applications without gluing with a hard set adhesive.

If the temperature of your floor is likely to rise above 45 degrees, it should be installed in these areas without underlay. Contact the QS technical dept. for any further advice.



### **Click-it! Never use a hammer or tapping block.**

Slightly lift the plank to be installed by holding your hand underneath. Push the short side joint down gently with your thumb moving from the inner corner towards the outside until you hear a "click". Ensure the short side ends are closed by knocking gently on the short side click connection with your wrist. Don't use a hammer or tapping block as it may possible harm your click connection. This is the easiest method for fitting the Uniclic® Multifit for Windsor click panels.

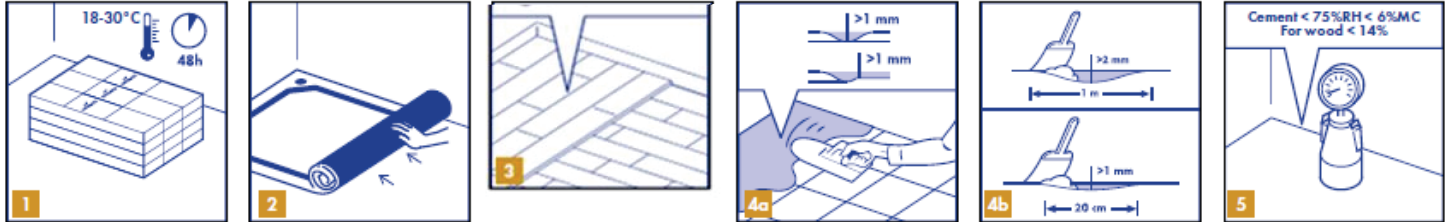


### **Keep indoor climate conditions above 0°C.**

Ensure that the indoor climate conditions are always kept > 0°C and preferably between 18-30°C.

Make sure that you leave an expansion joint of minimum 7-10 mm.

IN ORDER TO OBTAIN A GOOD RESULT, WE ADVISE TO FOLLOW ALL GIVEN INSTRUCTIONS CAREFULLY.



## 1. PREPARATION

We recommend to order all panels for a commercial flooring project at the same time.

1

Always store and transport Cflors's Windsor SPC carefully to prevent distortions. Store and transport the boxes on a flat surface in neat stacks. Never store the boxes upright or in moist, dusty rooms or places with extreme temperatures. Cflors's Windsor SPC must be acclimatized in the room of installation between 18-30°C for a period of at least 48 hours before installation. This floor & room temperature needs to be maintained prior to, during and for at least 24 hours after the installation is completed.

2

The type of subfloor, its quality and its preparation have a big influence on the final installation result. If the subfloor is not appropriate for the installation of Cflors's Windsor SPC then necessary actions should be taken. Contact your Cflors's dealer, who will be more than happy to help you. Be aware that unevenness in the subfloor may leave marks in your Cflors's Windsor SPC floor.

The subfloor should be stable and firmly fixed. Furthermore it cannot be soft, damaged or loose laid. The following floor coverings have to be removed: Carpet, needle felt, cushion vinyl, floating laminate and parquet, etc. Does not have to be removed: Ceramic, glued down vinyl tiles or planks, and fixed wooden floors.

3

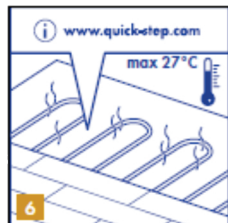
In case of installation on a wooden subfloor, please remove any existing floor covering first. No signs of mould and/or insect infestations should be present. Make sure the subfloor is level and nail down any loose parts. Apply an appropriate wooden levelling board level floor or levelling compound for best results. The levelling boards must be fixed every 30 cm with screws. The crawl space under the plank floor must be sufficiently ventilated. Remove any obstacles and make sure there is sufficient ventilation (minimum 4 cm<sup>2</sup> total ventilation openings per m<sup>2</sup> of floor). The moisture content of the wood must not exceed 14%.

4

Make sure the subfloor is completely flat. Cement joints of more than 1 mm in depth and 4 mm in width should be levelled out using an appropriate primer and levelling compound. Any unevenness of more than 1 mm over a length of 20 cm must be levelled out. Bumps should be removed by sanding or scraping. The same applies to unevenness of more than 2 mm over a length of 1 m. Use an appropriate levelling compound and check if a primer or sealer is needed with the supplier. In some cases, the use of an underlay can avoid extra levelling of the subfloor.

5

The moisture content of the subfloor must be less than 75%RH or 6%MC for concrete. For heated sub-floors it should be below 50%RH and 4%MC. Always measure, record and keep your moisture content results.



6

Floor heating systems (water / electricity) which are built-in the screed can be used with Cflors's Windsor SPC if a constant room & floor temperature of 18°C can be guaranteed during acclimatization, installation and 48h after installation. For health and safety reasons, a floor surface temperature of maximum 27°C must be maintained. Separate rooms with and without floor heating or with different temperature controllers should be installed with a transition profile.

7

Make sure that the subfloor is dry, flat, stable, clean and free from grease and chemical substances. If needed, scrape off and clean up old adhesives. Prior to installation, carefully remove all debris (including nails), sweep and vacuum. Repair major surface imperfections and large cracks. It is recommended to remove old skirting and to install new ones after the installation of the floor.

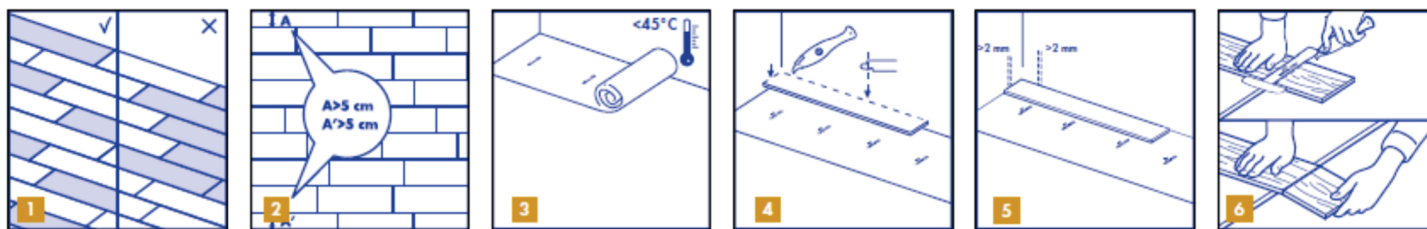
8

The following standard tools are needed: measurer, safety glasses, thin rope, gloves and a pencil. In addition to the standard tools, we recommend to use the concave cutter knife and installation tool. The latter serves as a 2-in-1 pulling bar and carpenters square.

The use of all accessories other than recommended accessories may cause damage to your Cflors's Windsor SPC. In such case the guarantee provided by Cflors's will be void.

9

Check all panels before and during installation in optimal light conditions. Defective panels must never be used.



## 2. INSTALLATION

1

During installation, make sure that you mix up the floor panels sufficiently so that there are not too many identical, lighter or darker panels next to each other. To obtain the best visual effect, it is best to fit the panels in the direction of the longest wall and parallel to the incidence of light. Ensure that the end joints of the panels in 2 successive rows are never in line, they should be staggered by at least 30 cm.

2

Measure the room before you start fitting. Make sure that the last row of panels is at least 5 cm wide when finishing the installation.

3

Do not use Cflors's Windsor SPC underlay where the floor temperature will exceed 45 degrees. Cflors's Windsor SPC has been designed to be installed into regulated environment above 0 degrees. It should not be installed into solariums, caravans, boats or other extreme applications without gluing with a hard set adhesive. If the temperature of your floor is likely to rise above 45 degrees, it should be installed in these areas without underlay. Contact the QS technical dept. for any further advice.

4

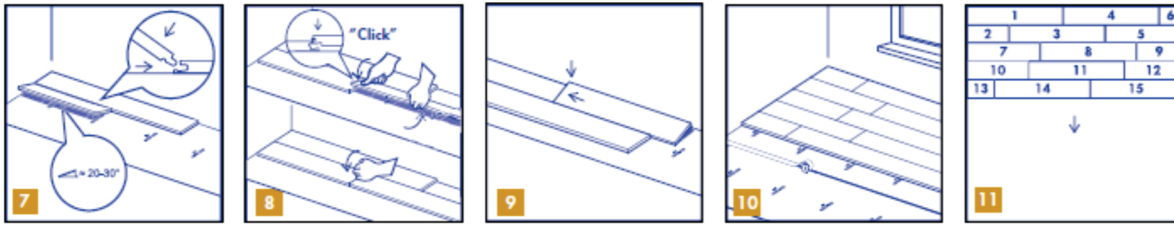
First, start in the left corner of the room and fit an underlay if needed. The underlay should be installed progressively together with the floor installation. We strongly recommend to use the special Cflors's Windsor SPC underlay, which has an insulating, sound-reducing and levelling function. An underlay which is too soft or made from the wrong material will damage your floor. A laminate/parquet underlay is not suitable for click SPC. You can find out more information about them and how to use them on the packaging of your underlay or from your dealer. Start the first row with a whole plank. Cut off the long side tongue of the click of first panel.

5

Fit the plank with cut off sides against the walls. Make sure that you leave an expansion joint of 7 mm. For installations with floor heating, we recommend to leave an expansion gap of 7-10 mm.

6

Cflors's Windsor SPC can easily be cut using a cutter or utility knife with the decor side face up. When cutting the vinyl plank, mark the line and use the knife to make a firm cut in the surface. Then break off the plank using both hands.



7

Turn the long side of the first panel of the second row into the already fitted panel at an angle of 20 to 30°. Move the panel to be fitted slightly up and down and at the same time exert some forward pressure. The panels will click together.

8

Then slide the third plank together horizontally. Slightly lift the plank to be installed by holding your hand underneath. Push the short side joint down gently with your thumb moving from the inner corner towards the outside until you hear a “click”. Ensure the short side ends are closed by knocking gently on the short side click connection with your wrist. Don’t use a hammer or tapping block as it may possible harm your click connection. This is the easiest method for fitting the Uniclic® Multifit for Cflors's Windsor SPCclick panels.

9

Now connect the panels of the first two rows on the short sides.

Check the expansion gap of and make sure the first rows are on a perfect straight line. You can check this by holding a string line along the installed planks and adjust the straightness of your floor when necessary. An expansion gap of 7 mm along the perimeter should be maintained. In the width and in the length direction of the planks there is no need for extra control joints.

10

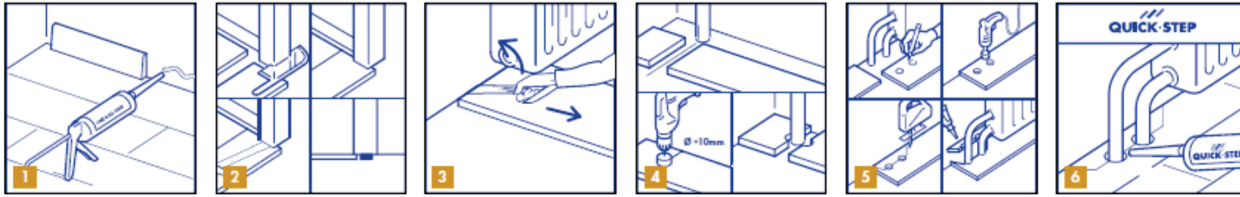
When the remaining piece of underlay is shorter than the width of a panel, install the next underlay. It is recommended to connect the underlays using thin tape.

11

Continue the installation like this row by row towards the end of the room. Always check each joint before continuing. You can press down gently with your thumb on top of every short end joint to ensure good locking.

12

Provide expansion joints in every alternative 8 meter



### 3. FINISHING

1

Inspect the final surface of the installed floor. Install skirting or scotia over the 5-7mm gap, fasten these to the wall only, never to the flooring itself. In places where profiles or skirtings cannot be placed, fill the expansion gaps with an elastic filler. In wet areas like bathrooms or laundries, a silicon bead can be used to seal the perimeter from moisture.

2

When the new flooring meets a threshold or a doorway, we recommend undercutting the moldings. To secure the right cut, turn a plank upside down and place it on the floor up to the door frame. Then place the Cflors's Windsor SPC hand saw flat against the plank and simply cut through the frame. Remove the cut out and vacuum away debris. You can now simply click the plank in on the long side at the side of the under cutted molding.

3

If it is difficult to tilt the planks (e.g. under radiators), use the Spacer installation tool to pull the panels together.

4

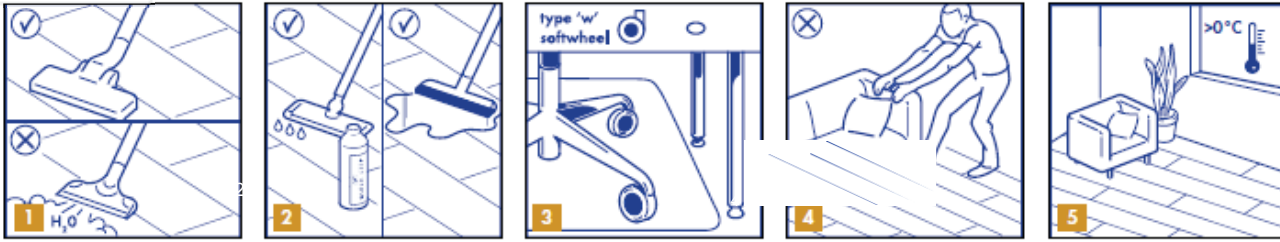
In rows where there is a pipe, make sure the pipe falls exactly in line with the short side of two panels. Take a drill bit with the same diameter as the pipe plus 10 mm. Click the panels together on the short side and drill a hole centered on the joint between the two panels. Now you can install the panels.

5

In case of a double pipe, drill a hole at each of the marked points that is equivalent to the diameter of the pipes plus 10 mm. If located on the long side of the plank, make a 45 degree cut from each hole to the edge of the plank.

6

Then, using an appropriate glue along the cut edges of the piece you cut out, glue the piece in place. Be sure no glue comes between the cut out piece and the subfloor.



#### 4. MAINTENANCE

You can immediately walk on your new Cflors's Windsor SPC floor after installation.

1

It is allowed to use a vacuum cleaner on your vinyl floor. The use of a steam cleaner is forbidden.

2

Your vinyl floor can be cleaned with a damp or wet mop.

Always remove spilled liquids immediately from the floor.

3

Protect furniture and chair legs with felt floor protectors. Use (office) chairs type W and seats with soft wheels that are suitable for a vinyl floor and/or use a suitable desk mat.

4

Never drag heavy items of furniture over the floor but lift them up. Make sure furniture legs have a large surface and are provided with non-staining felt floor protectors. The taller and/or wider the furniture feet are, the greater the repartition of weight will be on the floor and the less chance there is to damage the floor.

Place non-rubber backed mats at all outside entrances to prevent dirt, grit and soil from being tracked onto your floor. This will reduce damages, the maintenance requirement and extend the life of your floor. Please note that prolonged contact with rubber can cause a permanent stain.

Do not allow cigarettes, matches or other very hot items to contact the floor as this may cause permanent damage.

5

Ensure that the indoor climate conditions are always kept  $> 0^{\circ}\text{C}$  and preferably between  $18\text{-}30^{\circ}\text{C}$ . If the floor temperature exceeds  $45^{\circ}\text{C}$ , always install without underlay.